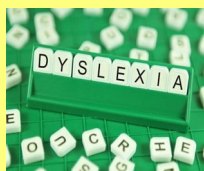


Specific Learning Difficulties

Electronic Resources



Recognising Dyslexia



This video is an introduction to Dyslexia. It explains what it is, how to recognise the signs and understand the associated difficulties. You will be shown assessments that may be used to assess dyslexic children, as well as strategies and resources that are designed to assist with the teaching of these pupils.

Before you begin watching this presentation, we suggest you download the following documents to refer to:

- [Guidance on Identifying Dyslexia](#)
- [Phonological Awareness Pack](#)

Maths Difficulties and Developmental Dyscalculia



This presentation covers the characteristics of dyscalculia, the difficulties dyscalculic learners experience and offers strategies to support them as well as resources designed to assist in teaching these pupils.

Please download the following document to look at whilst viewing the video:

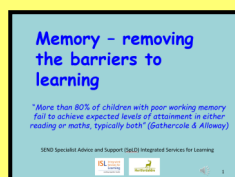
- [Guidance on Identifying Dyscalculia](#)

Memory



Part 1—Memory: The invisible barrier to learning

This presentation outlines the different types of memory and how difficulties with memory impact the SpLD learner.



Part 2—Memory: Removing the barriers to learning

Find out about adaptations and strategies to implement in the classroom setting to assist learners with weak memory.

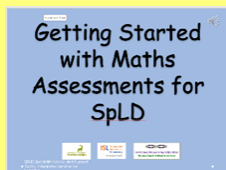
Herts Word Reading & Spelling Assessment



Find out about this assessment devised by the SpLD service to discover pupils' strengths and weaknesses in order to identify their needs. This presentation explains how to use the assessment and to monitor progress.

Download the [Word Reading & Assessment](#) to consult whilst watching this video.

Getting Started with Maths Assessments for SpLD

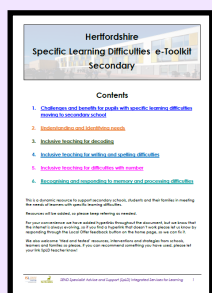


This video is a step by step guide on how to carry out the SpLD maths assessment. Once completed, it should provide an overview of the strengths and weaknesses the child is experiencing and provide a starting point for intervention teaching.

Prior to viewing, you need to download the 3 part assessment pack in order to follow the information easily:

- [Baseline Number Assessment](#)
- [Baseline Number Assessment Resource Booklet](#)
- [Pupil Number Booklet](#)

Secondary e toolkit



Visit this online document on the Herts Local Offer website designed to support Secondary schools and students meet the needs of learners with specific learning difficulties. It is full of advice, including interventions and strategies and links to useful information.

SpLD Guidance

These guidance documents are designed to support Hertfordshire schools, settings and families when working with children with Specific Learning Difficulties.

- [Guidance on Identifying Dyslexia](#)
- [Guidance on Identifying Dyscalculia](#)
- [Writing Guidance](#)
- [Phonological Awareness Pack](#)

Caution! Some of the links in this document may not work. This is because Internet Explorer is being discontinued and You tube videos are only able to be viewed using the following browsers: Microsoft Edge, Google Chrome, Firefox, Safari or Opera. If you experience difficulties opening any of the links in this document, you will need to instruct your computer to employ one of the recommended browsers. You can do this by using the following commands:

Start—settings—applications—web browser: then select recommended browser